

# Miyazaki Beef Roast Beef Bowl

This single bowl transforms  
your day into something  
extraordinary.  
Kisetsu Ryori Kawano



季節料理

かわの



季節料理  
かわの

📍 Sogo Bldg. 1F, 1-22 Chigusa-cho, Miyazaki City,  
Miyazaki 880-0006, Japan

☎ 0985-23-2077

🌐 info@kisetsu-kawano.jp

HP



Instagram



Business  
Hours

Lunch 11:30 – 14:00 (LO. 13:00)

Dinner 17:00 – 22:00 (LO. 21:00)

Regular  
holiday

Monday

Parking  
lot

Parking in Rear



Add us on LINE!

Get latest updates on LINE!

@163eaocf



A Historic 4-Time Champion.  
The King of Wagyu.



Miyazaki Beef—The undisputed champion of Japanese Wagyu, winning four consecutive "Wagyu Olympics" titles. Only the finest A4-grade-and-above beef earns this label. Savor the artistic marbling, rich aroma, and buttery texture of Japan's finest beef.

Unlocking the fullest flavors of the season.  
— Kisetsu Ryori Kawano



Savor the natural, exquisite flavors of Miyazaki Beef,  
prepared with masterful techniques since our founding.

Seasonal kaiseki cuisine  
paired with heartfelt hospitality.



Relax in private rooms, a 50-seat banquet hall, or at the counter. The first floor is fully wheelchair accessible.



Miyazaki Beef Roast Beef Bowl  
- Japanese Artisan Style

**2,970 yen**

Served with Salad, Miso Soup, and Japanese Pickles.

Experience Japanese craftsmanship with premium Miyazaki Beef. Savor the buttery, melt-in-your-mouth roast beef bowl with our signature sauce.

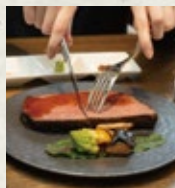


Miyazaki Beef Roast Beef  
- Japanese Artisan Style

**4,950 yen**

All 8 Dishes

The main dish features a whole Miyazaki Beef sirloin roasted in one piece and sliced into individual servings just before being served. Enjoy it together with a selection of condiments. Please enjoy our Miyazaki beef roast beef.



**Lunch**

11:30 - 14:00 (LO. 13:00)

Limited to 20 servings per day



Iroha Set Meal - いろは御膳 -  
16 Dishes in Total **2,750 yen**

90-minute time limit



Ozaki Beef Stew Set Meal  
10 Dishes in Total **2,970 yen**



YANAGI - 柳 -  
7 Dishes in Total **3,850 yen**



BOTAN - 牡丹 -  
7 Dishes in Total **6,600 yen**

**Dinner**

17:00 - 22:00 (LO. 21:00)



HAGI - 萩 -  
9 Dishes in Total **7,700 yen**



YURI - 百合 -  
9 Dishes in Total **9,900 yen**



RAN - 蘭 -  
9 Dishes in Total **14,300 yen**



Celebration Plan - 景福 -  
9 Dishes in Total **11,000 yen**

**A La Carte Menu**

ALL TIME



Ozaki beef sushi



Ozaki beef broth shabu



Ozaki beef  
Kyoto-style stew



Seasonal fish broth  
shabu-shabu



Miyazaki specialty  
Chicken Nanban



Miyazaki beef  
roast beef

Others...

**Drink Menu**



- Suntory The Premium Malt's ..... 1 bottle **1,100 yen**
- Kaku Highball ..... 1 cup **770 yen**
- YAMASAKI Highball ..... 1 cup **1,870 yen**
- Hakushu Highball ..... 1 cup **1,870 yen**
- Honkaku Kirishima (Shochu) ..... 1 cup **440 yen**
- Hyakunen no Kodoku (Shochu) ..... 1 cup **1,760 yen**

Others...

The prices displayed in our store include tax.